

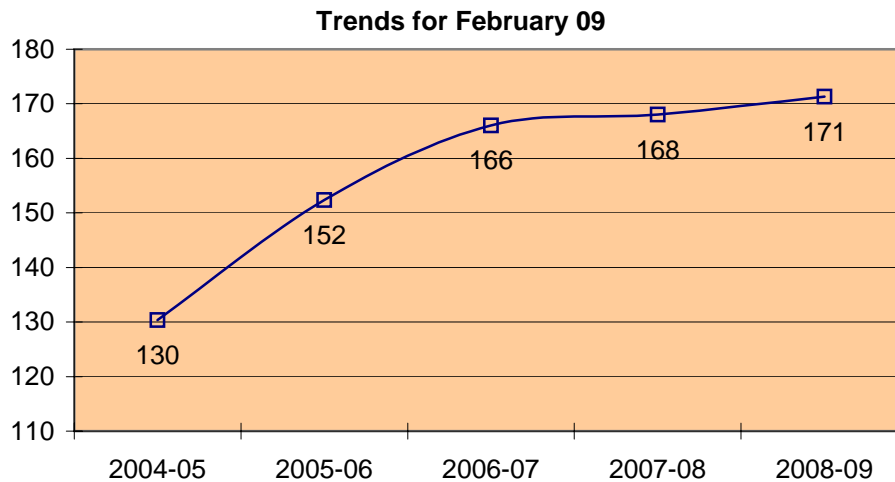


Road Freight Index Chart for February 2009

The RFI stood at 171 points for the month of February 2009. Rates have increased by 3 points from February 2008 when the index stood at 168. The increase in percentage of the RFI in February 2009 over January 2009 was 0.64.

IRFI TRENDS FOR February :

Kolkata - Kanpur route witnessed highest increase in freight rates by 27% and Delhi – Kolkata route saw a fall of 25%. For Metros Ex-Chennai rates registered highest increase by 6% and Ex- Delhi rates registered highest decrease by 11%. There has also been a diesel reduction of almost 12% on account of the cuts in prices in December and January. However, on account of shortage of vehicles in the market; this has not significantly reduced freight rates.



Auto:

Overall production in February 2009 grew by 6.10 percent over the same month last year. The cumulative production data for April 2008 – February 2009 shows a growth of 2.65 percent over April 2007 – February 2008.

Auto sales were helped by higher disbursements by public sector banks.

Commercial Vehicles:

The sales of Commercial Vehicles segment declined by 21.08 percent during April 2008 – February 2009 as compared to the same period last year. In February 2009, Commercial vehicles sales fell by 31.68 percent compared to February 2008. M&HCV fell by 51.33 percent and LCV fell by 3.70 percent. .

However, with the excise duty getting reduced from 10% to 8%, commercial vehicles (CVs) are set to become cheaper and this would be the second reduction in price, the first been done in December after the government reduced the Cenvat by 4% across the board. The commercial vehicle segment has been among the worst hit sector due to the ongoing slowdown.

Forecast for March 2009:

The RFI in March 2008 over March 2007 registered an increase by 3% and 3% increase over February 2007. The RFI stood at 169 for the month of March 2008 over 166 for the month of March 2007 registering an Increase of 3 Points. The RFI for the month of March 2009 is expected to rise marginally due to increased movement in the month of March.

March 2009 Chart:

