

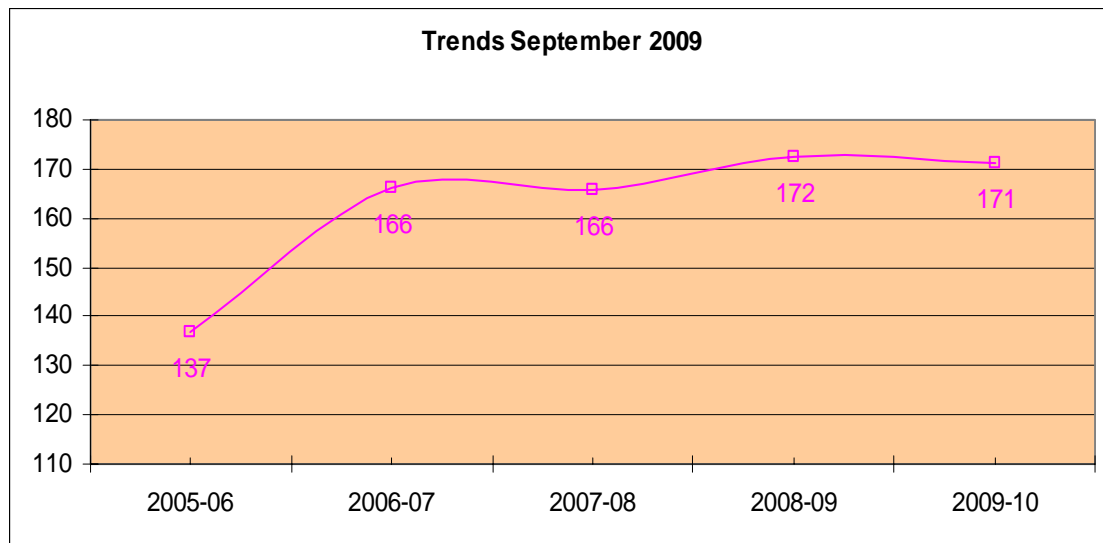


Road Freight Index Chart for September 2009

The RFI stood at 171 points for the month of September 2009. Decrease in percentage of the RFI in September 2009 over September 2008 was 1 point.

IRFI TRENDS FOR September 2009 :

Delhi- Hyderabad route witnessed highest increase in freight rates by 21% and Kolkata - Chennai route saw a fall of 22%. For Metros Ex – Delhi rates registered highest increase by 3% and Ex - Kolkata rates registered highest decrease by 8%.



Automobiles:

The cumulative production data for April-August 2009 shows production growth of 11.23 percent over same period last year. Passenger Vehicles segment during April-August 2009 grew at 11.97 percent over same period last year.

Three Wheelers sales recorded a growth rate of 12.09 percent .Two Wheelers registered a growth of 17.70 percent during April-August 2009. Mopeds, Scooters and Motorcycles grew by 24.56 percent, 20.52 percent and 17.11 percent respectively.

Commercial Vehicles

The overall Commercial Vehicles segment registered negative growth at 2.19 percent during April-August 2009 as compared to the same period last year. While Medium & Heavy Commercial Vehicles registered de-growth at 23.54 percent, Light Commercial Vehicles grew at 21.75 percent.

Forecast for October 2009:

The RFI in October 2008 over October 2007 registered an increase by 6% and 7% increase over September 2007. The RFI stood at 172 for the month of October 2008 over 166 for the month of September 2007 registering an increase of 6 Points. The RFI for the month of October 2009 can be expected to decrease marginally.

